

Introducing our Property Strategy



For a high quality site, ready to match our ambitions for curriculum change

16%

**learner number
growth between
2021 and 2027**



Our vision is to be a high performing sixth form college for 2,000 students. We want students to be proud to study at Monoux and proud to meet high standards. We want our working environment to support the well-being of staff.

With choiceful investment, our estate will be an enabler of high standards and ambitious activities. meeting the demands of curriculum change, growth in student numbers and the development of skills.

Pride in our college also means improving sustainability and reducing energy usage.

➔ Our property strategy has 3 essential themes:

1. Building for a new curriculum

We require specialist accommodation for our T Level curriculum from 2024, as a priority in Science and Healthcare.

Our IT teaching spaces require development.

Our pre-16 courses require dedicated spaces.

2. Creating adaptable and innovative spaces

Alongside curriculum delivery, the college places a high priority on personal and skills development, key aspects that require well-planned spaces.

We require a new flexible space for group activities, talks and welfare support.

3. A well-maintained and sustainable estate

We face significant maintenance and efficiency challenges.

We aim to improve our canteen and refurbish classrooms.

Our Sustainability Strategy includes goals for our estate and well-being.

➔ We are ready to act now:

By 2024

£1.3M project to add 4 additional classrooms and improve IT teaching spaces.

£1M project to refurbish science and healthcare building.

Essential maintenance plan underway; most urgent completed.

By 2027

DfE funding secured to improve and expand our canteen space, to optimise use of existing space to provide high quality offices, additional classrooms and improved toilet facilities.

Condition of gatehouse improved and repurposed.

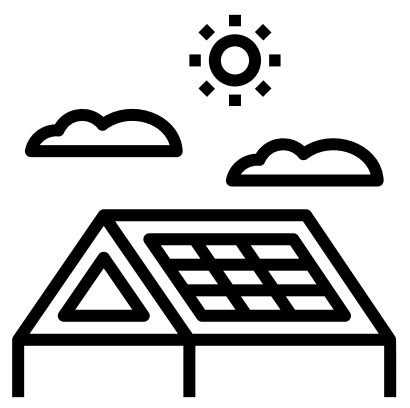
Most ambitious

Through land sale (£3.5M estimate) and fundraising (£1M target) build a centre for collaborative learning and community engagement.

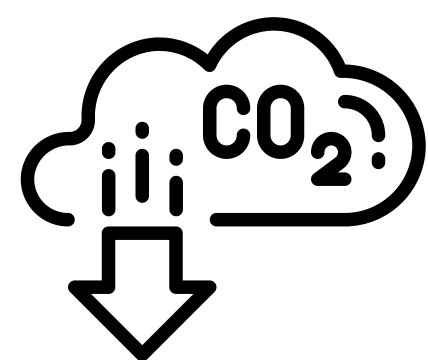
Programme of all classroom refurbishment underway.



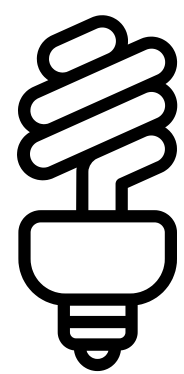
➔ People and buildings working together for sustainable practices:



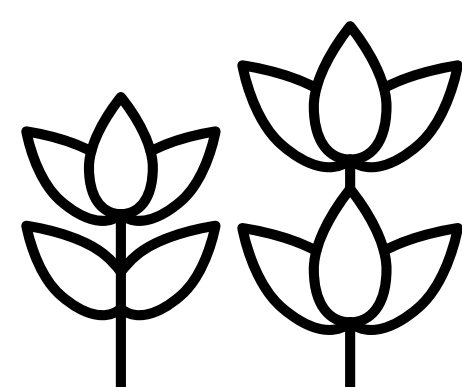
Efficiency in new building works



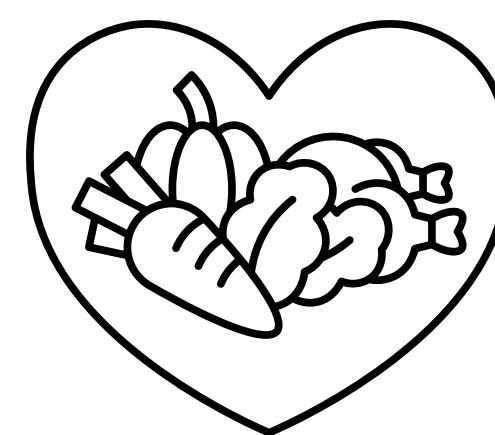
Reduced energy consumption



Energy efficient materials



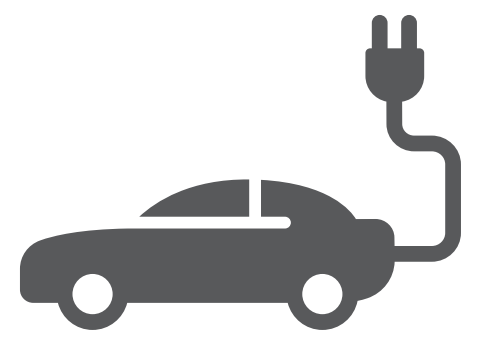
Cultivating our green spaces



Sustainable food policy

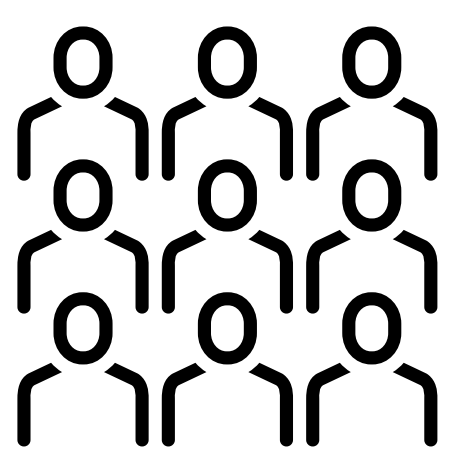


Promotion of cycling



Electric car scheme for staff

➔ Our Property Strategy will be an enabler of everything we do:



2030

Young people



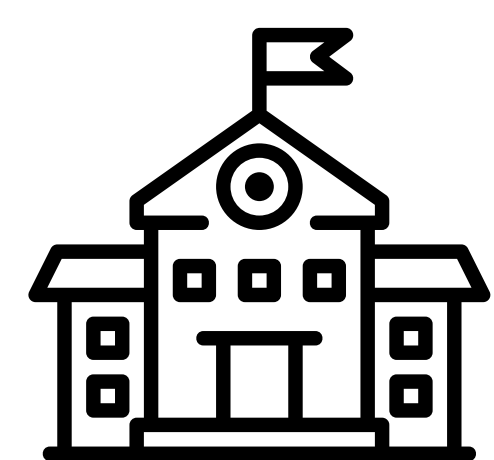
130

Employees



1,165,000

Teaching and guidance hours each year



500

Years of education and support for social mobility